



RED SWASTIKA SCHOOL

SCIENCE 2018 SEMESTRAL EXAMINATION 1 PRIMARY 3

Name : _____ ()

Class : Primary 3/ _____

Date : 7 May 2018

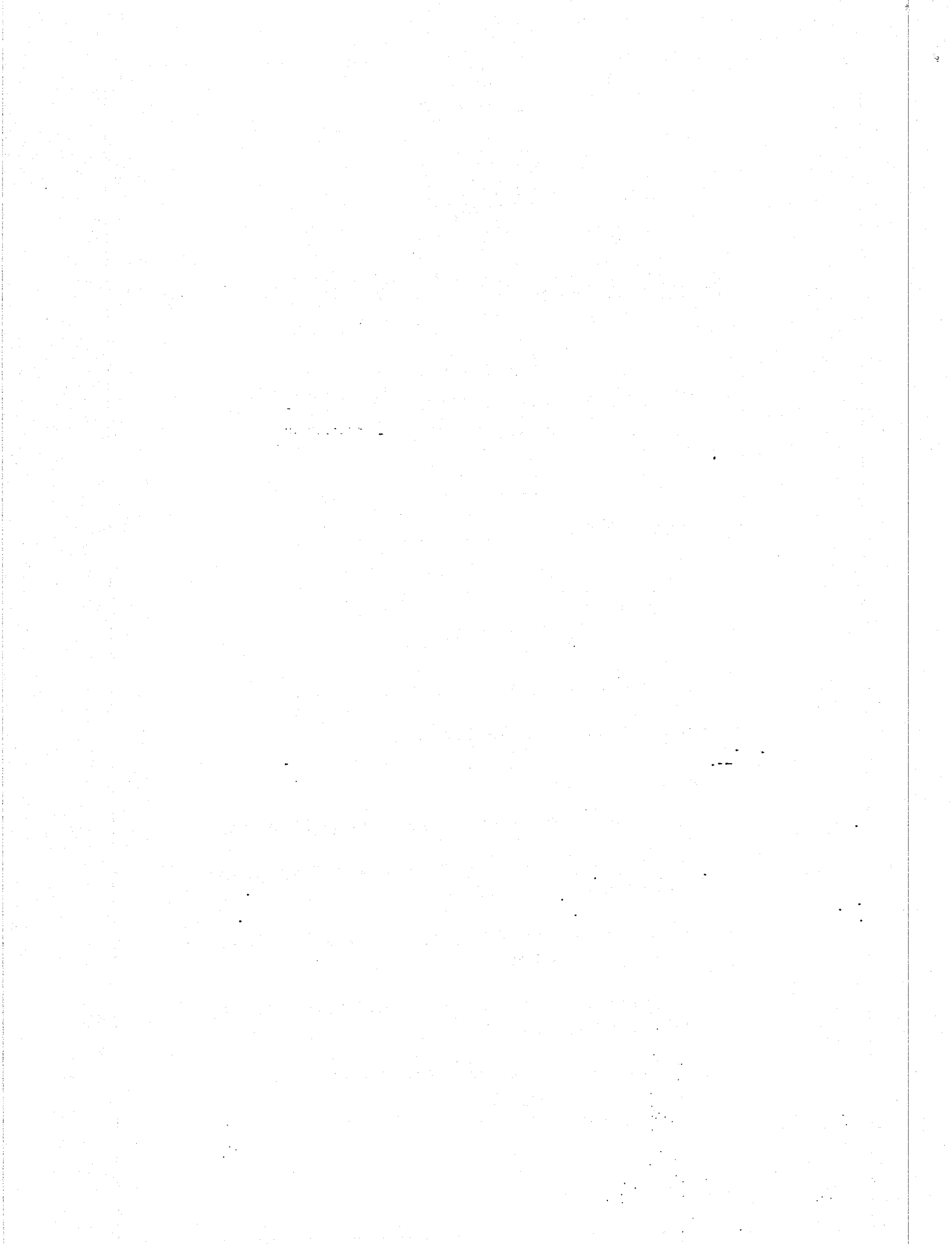
BOOKLET A

Total time for Booklets A & B: 1h 30 min

Booklet A: 15 questions (30 marks)

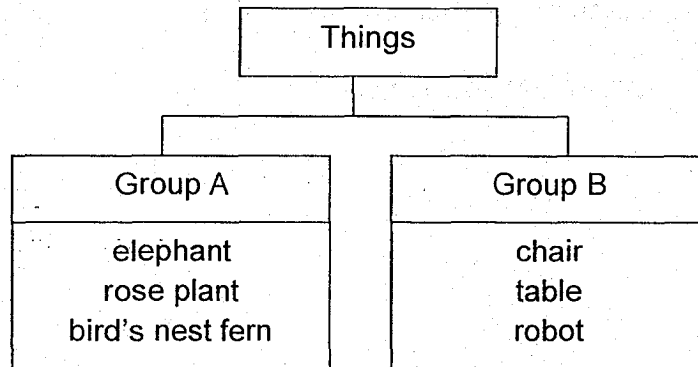
Note:

1. Do not open the booklet until you are told to do so.
2. Read carefully the instructions given at the beginning of each part of the booklet.
3. Do not waste time. If the question is too difficult for you, go on to the next question.
4. Check your answers thoroughly and make sure you attempt every question.
5. In this booklet, you should have the following:
 - a. Page 1 to Page 8
 - b. Questions 1 to 15



For Questions 1 to 15, choose the most suitable answer and shade its number in the OAS provided.

1. Look at the classification table below.



Which of the following falls in group B?

- (1) ant
- (2) human
- (3) umbrella
- (4) mushroom

2. Which of the following statements is true about plants?

All plants _____.

- (1) bear fruits
- (2) have flowers
- (3) reproduce by spores
- (4) make their own food

3. James made the following statements about birds.

A: All birds can fly.

B: All birds have a beak as its mouth.

C: All birds reproduce by laying eggs.

D: All birds have feathers as their outer-covering.

Which of the above statements is false?

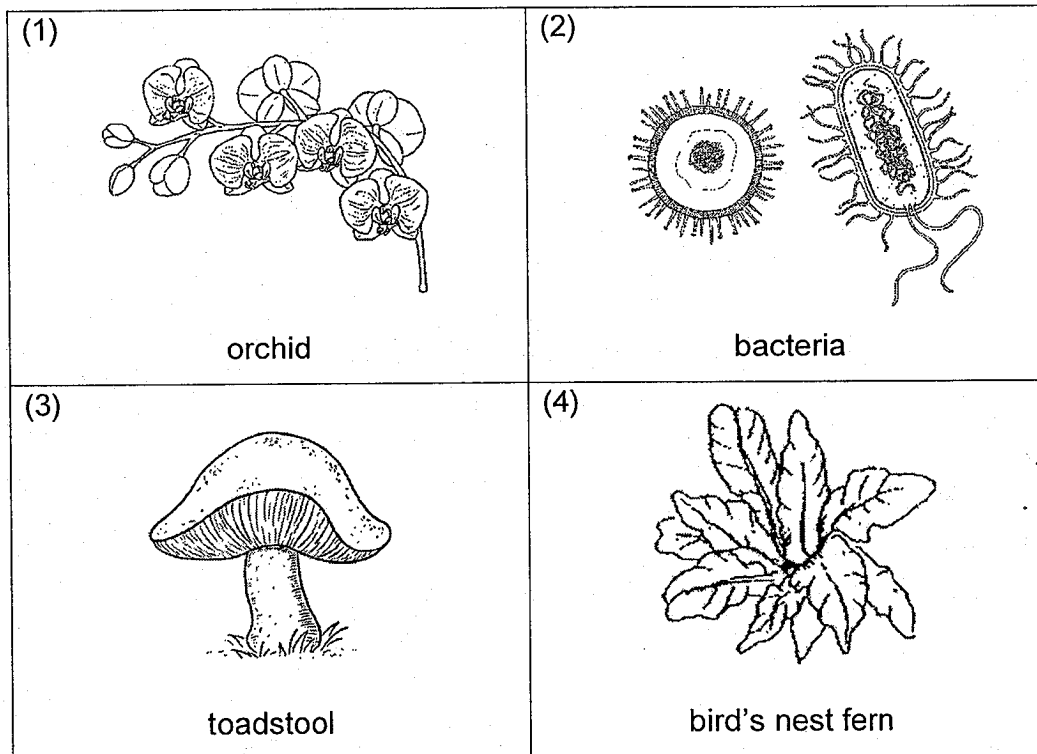
(1) A

(2) B

(3) C

(4) D

4. Which one of the following can be classified as fungi?



5. Which of the following statements about bacteria is/are false?

A: Bacteria cannot reproduce.

B: Bacteria can be useful to us.

C: Bacteria comes in different shapes and sizes.

(1) A only

(2) A and B only

(3) A and C only

(4) B and C only

6. John quickly moved his hand away when he accidentally touched a hot stove.



What characteristic of living things does this show?

Living things _____.

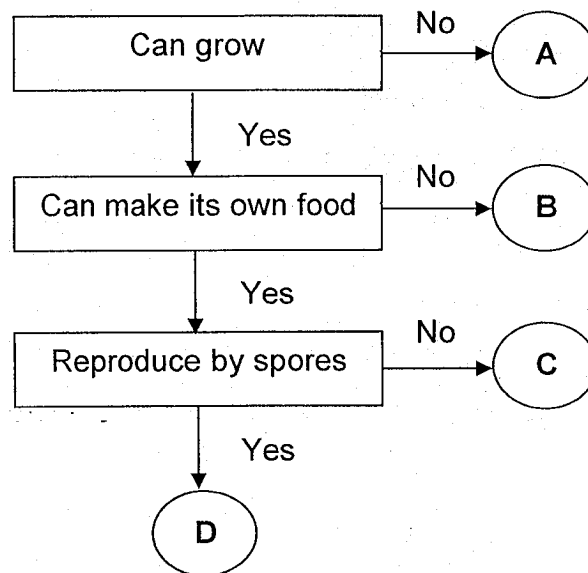
(1) grow

(2) need air, food and water

(3) respond to changes around them

(4) reproduce to ensure continuity of its kind


7. Study the flow chart below.



Which of the following would best represent a rose plant?

- (1) A
- (2) B
- (3) C
- (4) D

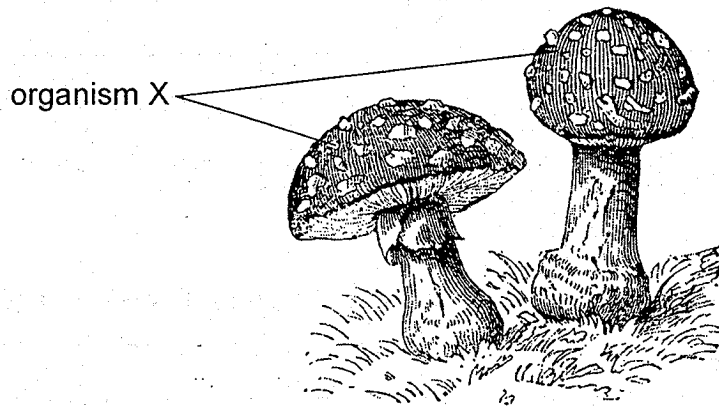
8. Animal Y has the following characteristics.

Animal Y	Characteristics of animal Y
	<ul style="list-style-type: none">• Lays eggs• Has moist skin• Lives on land and water

Which group of animals does animal Y belong to?

- (1) insects
- (2) reptiles
- (3) mammals
- (4) amphibians

9. The diagram below shows organism X.



Which of the statements about organism X is/are true?

A: It is a plant.

B: It reproduces by spores.

C: It can make its own food.

(1) A only

(2) B only

(3) B and C only

(4) A, B and C

10. The table below describes the characteristics of animals in group P and Q.

Characteristics	P	Q
Have feathers	✓	
Have three pairs of legs		✓
Have a beak as its mouth	✓	
Have three main body parts		✓

Which of the following best represents the headings of group P and group Q?

	P	Q
(1)	insects	reptiles
(2)	birds	insects
(3)	amphibians	birds
(4)	reptiles	amphibians

11. Mdm Lim bought an object with the following properties.

- It is strong.
- It is waterproof.
- It can float on water.

Which one of the following objects could Mdm Lim have bought?

- (1) metal fork
- (2) cotton t-shirt
- (3) ceramic mug
- (4) plastic swimming board

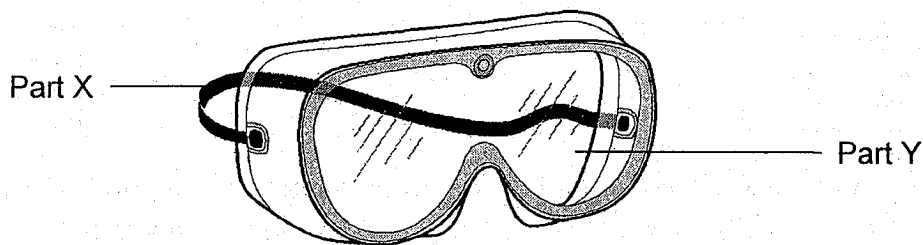
12. Study the classification table below.

Group X	Group Y
magazine notebook	key paper clip

Based on the materials they are made from, which of the following can be placed into group X and group Y?

	Group X	Group Y
(1)	dictionary	t-shirt
(2)	t-shirt	nail
(3)	nail	dictionary
(4)	dictionary	nail

13. Which of the following best shows the materials commonly used to make part X and part Y of a pair of goggles?



	Part X	Part Y
(1)	rubber	plastic
(2)	fabric	metal
(3)	ceramic	plastic
(4)	rubber	fabric

14. Plastic is a suitable material to make a children's cup as seen below.

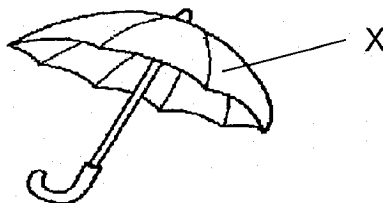


Which of the following characteristics does not explain why plastic is used to make the cup?

- (1) It is light.
 - (2) It is flexible.
 - (3) It does not break easily.
 - (4) It does not get hot easily.
15. The table shows the properties of materials A, B, C and D.

Property	Materials			
	A	B	C	D
Flexibility	✓	✓		✓
Transparency		✓	✓	✓
Waterproof	✓		✓	✓

Based on the table, which material is most suitable to make part X of the umbrella such that it provides shelter from the rain and shade from the sun?



- (1) A
- (2) B
- (3) C
- (4) D

End of Booklet A



RED SWASTIKA SCHOOL

SCIENCE 2018 SEMESTRAL EXAMINATION 1 PRIMARY 3

Name : _____ ()

Class : Primary 3/ _____

Date : 7 May 2018

BOOKLET B

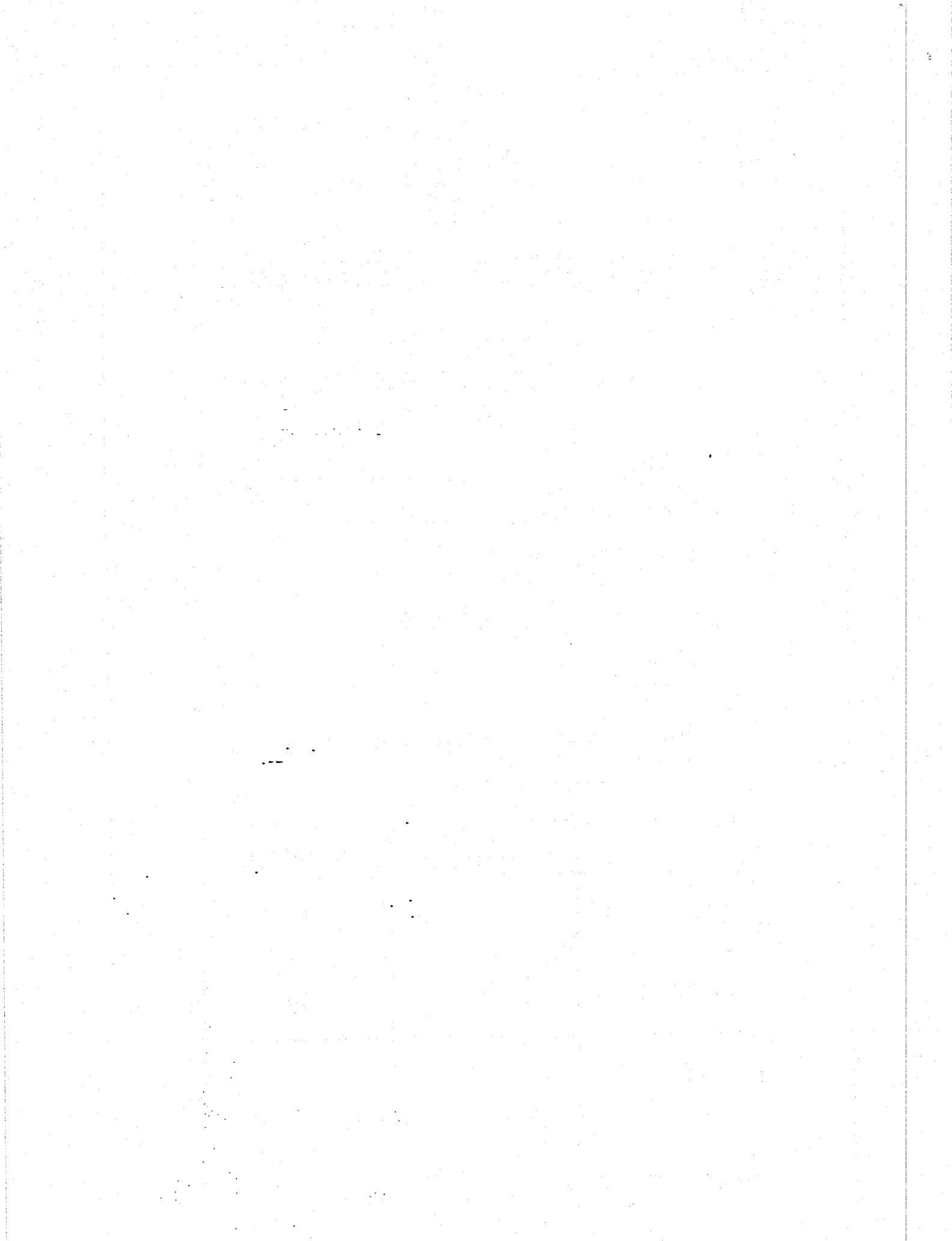
6 Questions
20 Marks

In this booklet, you should have the following:

- Page 9 to Page 14
- Questions 16 to 21

	MARKS OBTAINED	POSSIBLE
BOOKLET A		30
BOOKLET B		20
TOTAL		50

Parent's Signature : _____



Answer all questions in the space provided.

16. Study the table below carefully.

Group A	Group B
cockroach	cow
mosquito	dog

a) Give a possible heading for group A and group B. (1m)

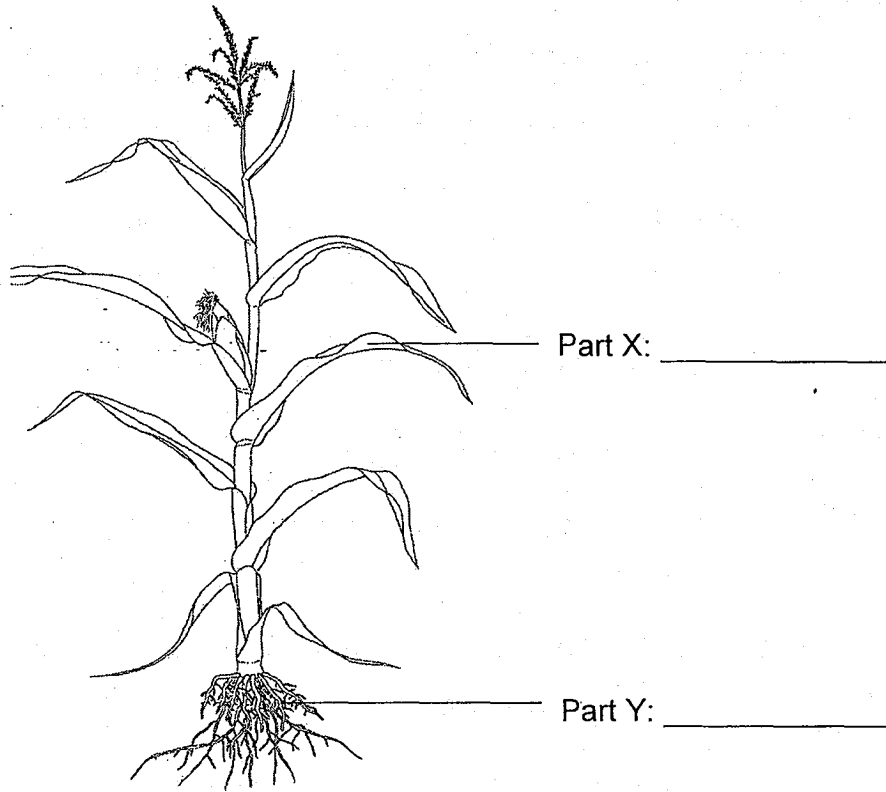
Group A: _____

Group B: _____

b) State one characteristic that the organisms in group B have in common in their method of reproduction. (1m)

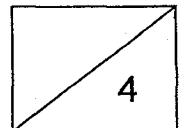
c) How are the organisms in group A different from group B in terms of their number of legs? (1m)

17. The diagram below shows a corn plant.

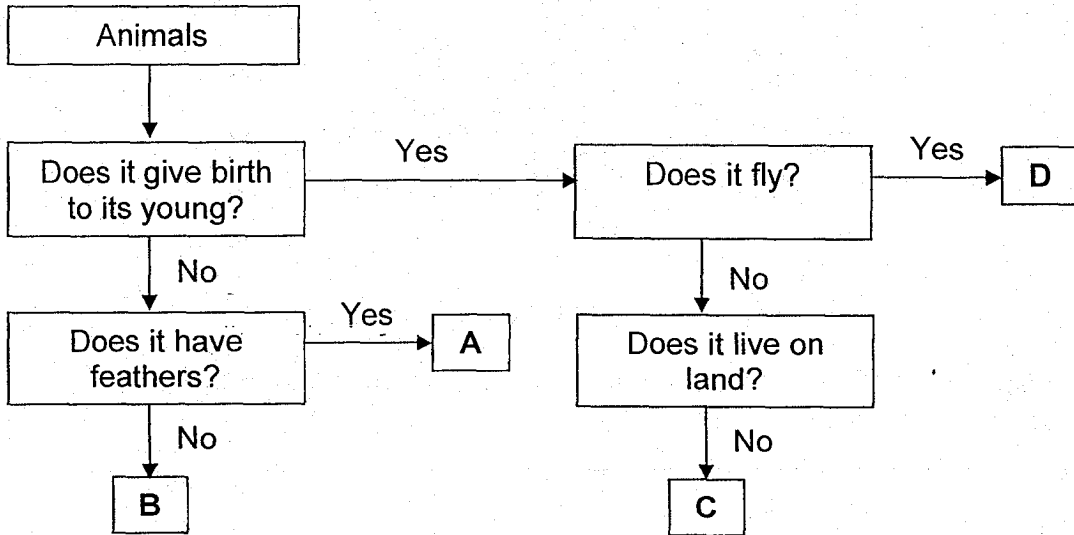


- a) Identify the parts labelled X and Y in the diagram above. (2m)
- b) Explain why the plant will die after some time when part Y is removed. (1m)

- c) State another function of part Y. (1m)



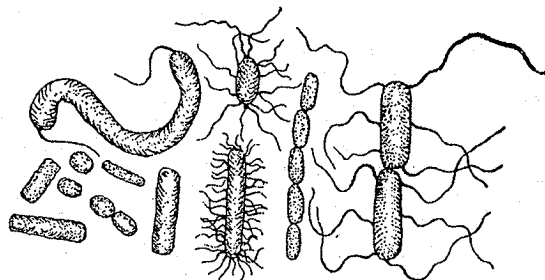
18. The flow chart below shows how four animals, A, B, C and D are grouped.



a) Based on the information in the flow chart above, describe the characteristics of animal A. (2m)

b) Based on the flow chart, which animals, A, B, C or D, best represents a bat? (1m)

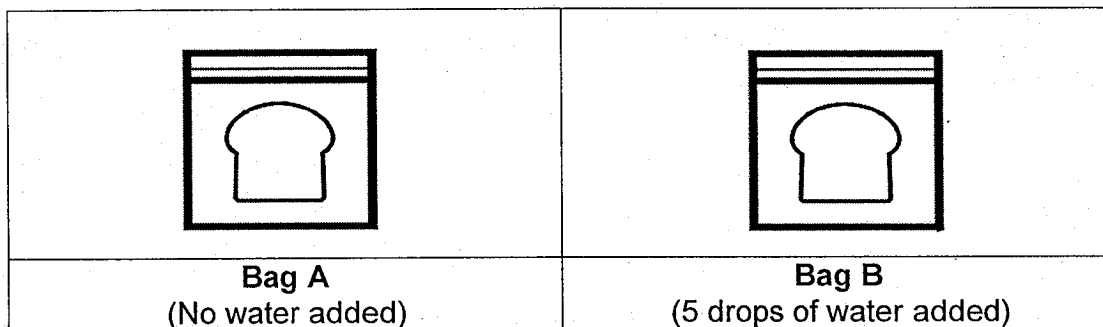
19. Sandra is only able to see organism A below using a microscope.



organism A

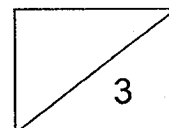
a) Which group of living things does organism A most likely belong to? (1m)

Two slices of bread were kept in two separate sealed bags as seen below. Five drops of water were added only to bag B.



b) Which bread in bag A or bag B would have more mould growing on it after two weeks? (1m)

c) Explain your answer in part (b). (1m)



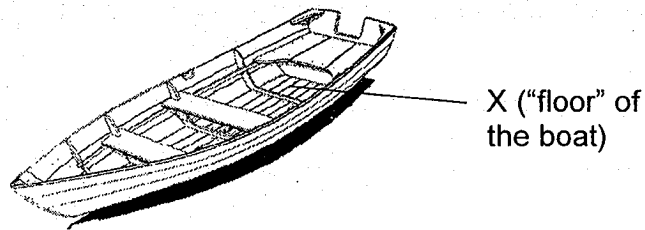
20. Different amounts of weights were put on materials P, Q and R to test for their strength. The table below shows the maximum weight the materials can hold before they break.

Material	Maximum weight it can hold (kg)
P	90
Q	5
R	20

- a) Arrange the materials (P, Q, R) in order of the strength, starting from the weakest to the strongest. (1m)

_____ (weakest) _____ (strongest)

- b) The picture shows a boat.



Based on the table, which material (P, Q or R) is most suitable to make part X of the boat that can hold 80kg of items? (1m)

- c) Aside from being strong, which of the following properties is/are also important to make part X of the boat? You may tick more than one option. (2m)

Properties of materials needed to make part X of the boat	Tick (✓) the correct options
Able to float on water	
Allow light to pass through	
Can bend easily	
Does not absorb water	

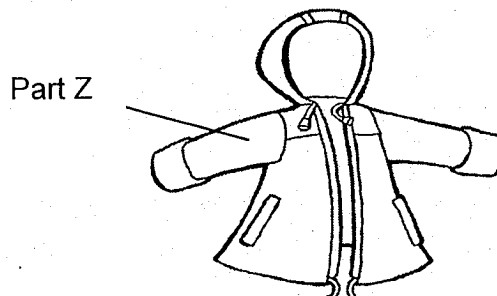
21. Study the table below. A tick (✓) shows the characteristic that the material has.

Characteristic	Material A	Material B	Material C
Strong	✓	✓	
Flexible	✓		✓
Waterproof	✓	✓	

a) State one difference between the characteristics of material A and B. (1m)

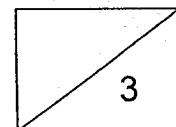
b) Based on the table, explain which characteristic of material C makes it more suitable to make a bath towel as compared to material A. (1m)

The item shown below is a raincoat.



c) Based on the table, what is the disadvantage of using material B to make part Z of the raincoat? (1m)

End of Section B
Please check your answers.



EXAM PAPER 2018 (P3)

SCHOOL : RED SWASTIKA

SUBJECT : SCIENCE

TERM : SA1

Q1	Q2	Q3	Q4	Q5	Q6	Q7	Q8	Q9	Q10
3	4	1	3	1	3	3	4	2	2
Q11	Q12	Q13	Q14	Q15					
4	4	1	2	1					

Q16) a) Group A : insects

Group B : mammals

b) The organisms in group B give birth to young alive.

c) The organisms in group A have six legs but the organisms in group B have four legs.

Q17) a) Part X : leaf

Part Y : root

b) The plant is unable to absorb water to make food.

c) Part Y holds the plants firmly to the ground.

Q18) a) Animal A does not give birth to its young and has feather.

b) D

Q19) a) Bacteria

b) Bag B

c) The bread in bag B contains more water than the bread in bag A. Water helps fungi to grow. Therefore, the bread in Bag B would have more mould after 2 weeks.

Q20) a) Q, R, P

b) Material P

c) Able to float on water., Does not absorb water

Q21) a) Material A is flexible but Material B is not flexible.

b) Material C is not water proof but material A is waterproof.

c) Material B is not flexible.